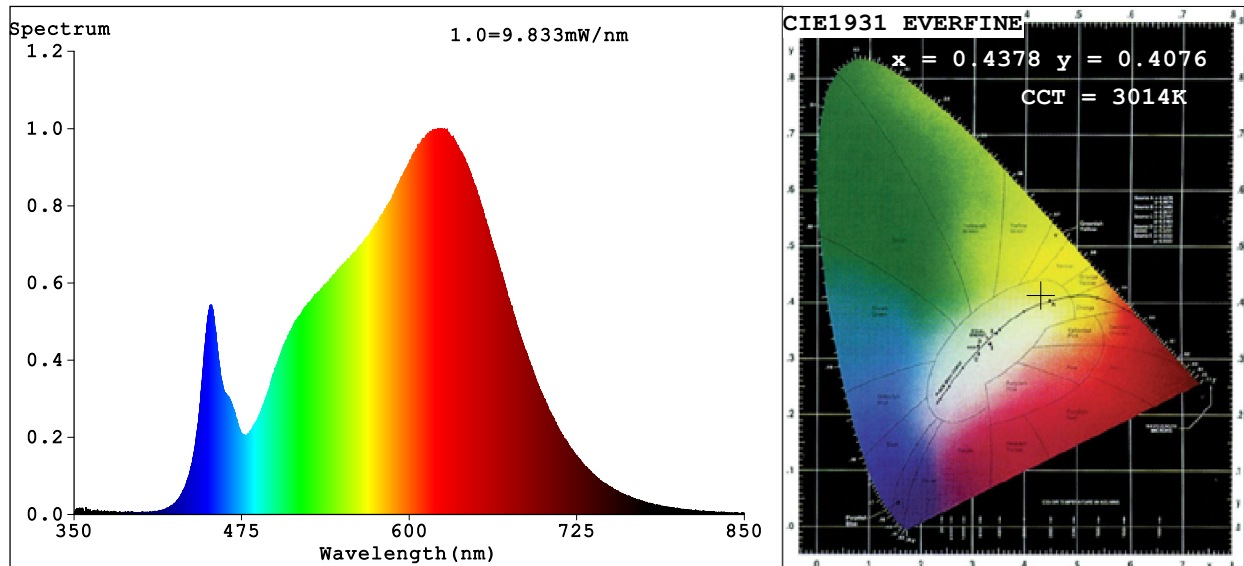


Spectrum Test Report



Color Parameters:

Chromaticity Coordinate: $x=0.4378$ $y=0.4076$ $u'=0.2496$ $v'=0.5229$

CCT=3014K (Duv=0.0013) Dominant WL:Ld =582.3nm Purity=53.8%

Ratio:R=24.2% G=73.0% B=2.8%; Peak WL:Lp=626.3nm FWHM=164.2nm

Render Index:Ra=93.5 CRI=90.5 TM30:Rf=92 Rg=99

R1 =94 R2 =96 R3 =97 R4 =95 R5 =93 R6 =95 R7 =94

R8 =84 R9 =63 R10=90 R11=96 R12=79 R13=94 R14=98 R15=90

Photo Parameters:

Flux = 490.0 lm Eff. : 59.95 lm/W Fe = 1.684 W

Electrical parameters:

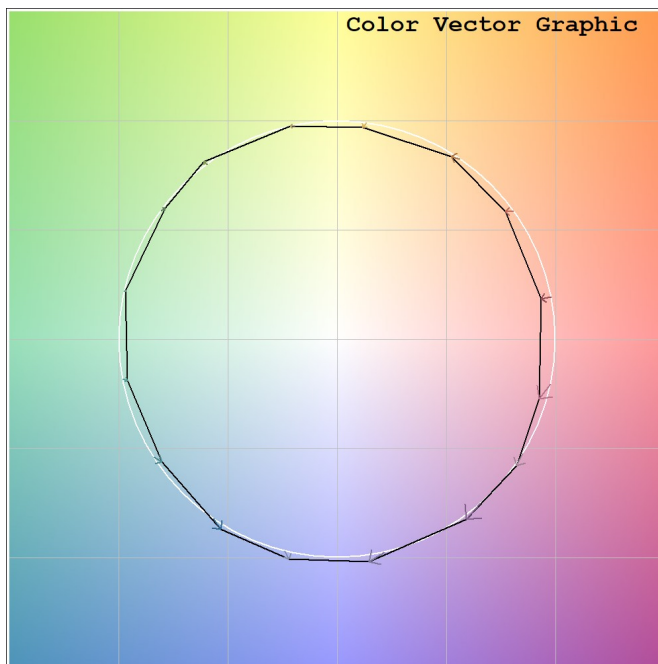
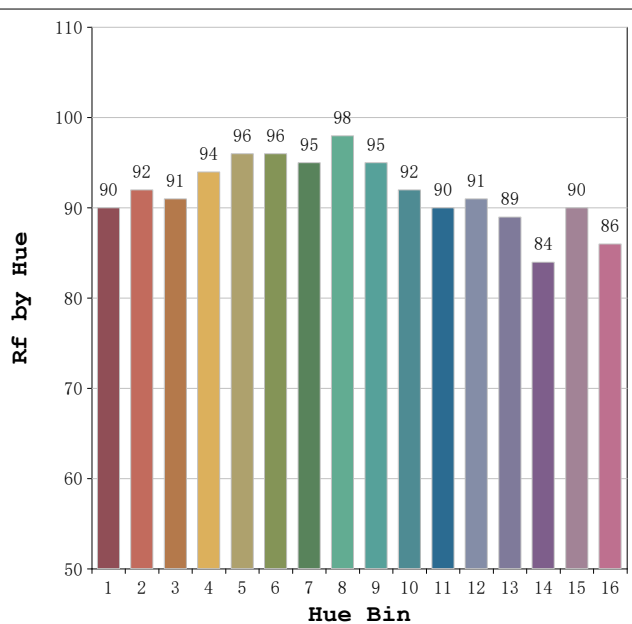
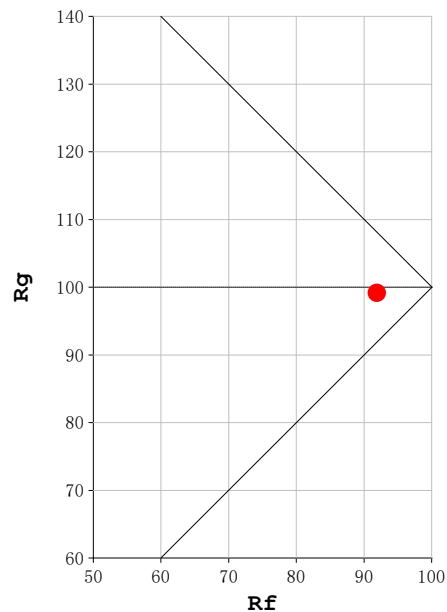
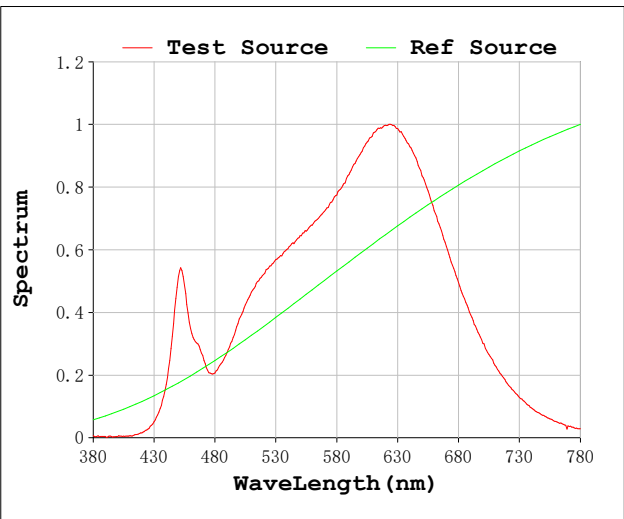
V = 230.10 V I = 0.03781 A P = 8.173 W PF = 0.9394

Status: Integral T = 2000 ms Ip = 34414 (53%)

Model:Focalis Axis 8 W
Tester:Sergio Carneros
Temperature:20Deg
Manufacturer:Luz Negra

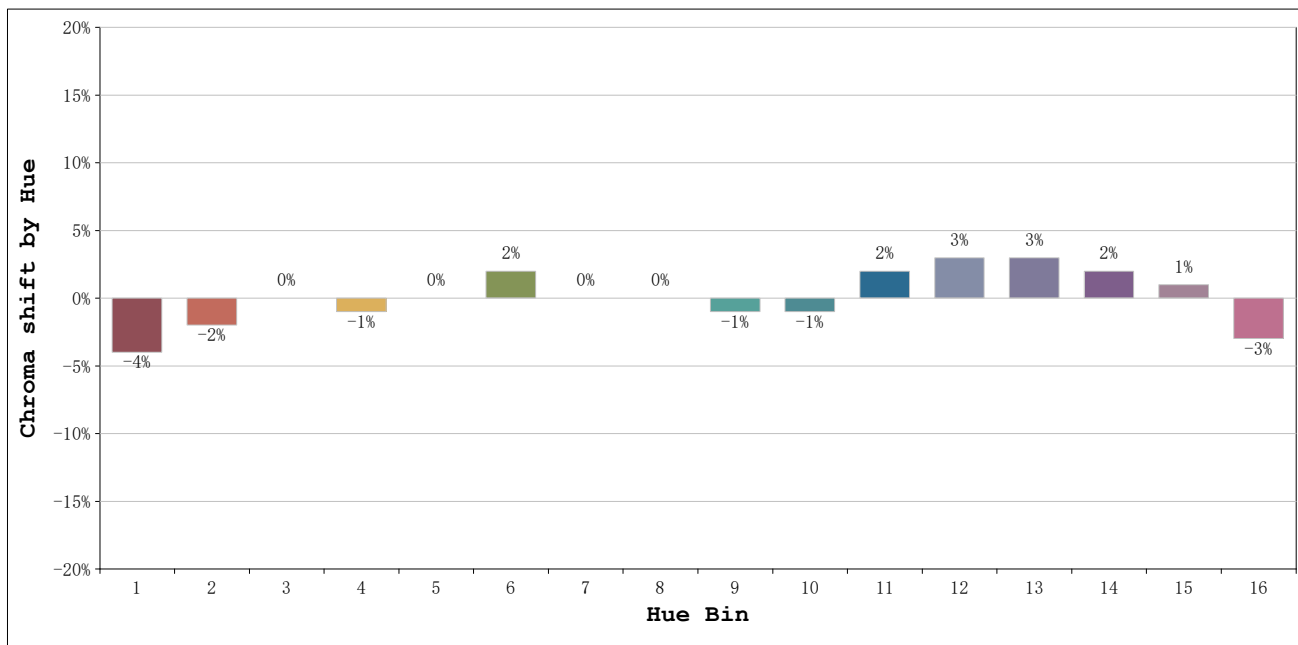
Number:3000K 35°
Date:2026-03-20 12:43:46
Humidity:50%
Remarks:1 unidad ref.blanco

Rf: 92 **CCT: 3014 K** **u': 0.2496**
Rg: 99 **Duv: 0.0013** **v': 0.5229**



Model:Focalis Axis 8 W
 Tester:Sergio Carneros
 Temperature:20Deg
 Manufacturer:Luz Negra

Number:3000K 35°
 Date:2026-03-20 12:43:46
 Humidity:50%
 Remarks:1 unidad ref.blanco



			Graphic shift(%)	
Hue Bin	Hue Angle	Rf	Chroma	Hue
1	0.0° - 22.5°	90	-4	0
2	22.5° - 45.0°	92	-2	2
3	45.0° - 67.5°	91	0	4
4	67.5° - 90.0°	94	-1	1
5	90.0° - 112.5°	96	0	2
6	112.5° - 135.0°	96	2	1
7	135.0° - 157.5°	95	0	-1
8	157.5° - 180.0°	98	0	0
9	180.0° - 202.5°	95	-1	1
10	202.5° - 225.0°	92	-1	4
11	225.0° - 247.5°	90	2	5
12	247.5° - 270.0°	91	3	2
13	270.0° - 292.5°	89	3	-7
14	292.5° - 315.0°	84	2	-8
15	315.0° - 337.5°	90	1	-5
16	337.5° - 360.0°	86	-3	-7

Model:Focalis Axis 8 W
 Tester:Sergio Carneros
 Temperature:20Deg
 Manufacturer:Luz Negra

Number:3000K 35°
 Date:2026-03-20 12:43:46
 Humidity:50%
 Remarks:1 unidad ref.blanco